

# White River–Lake Tapps — Yesterday and Today



**Headgates**  
Removed and refurbished the headgates; replaced motorized controls.



**Timber Flume Replacement**  
Replaced 2,200 feet of 28 feet wide timber flume with 18 foot wide concrete flume; repaired sections of existing concrete flume

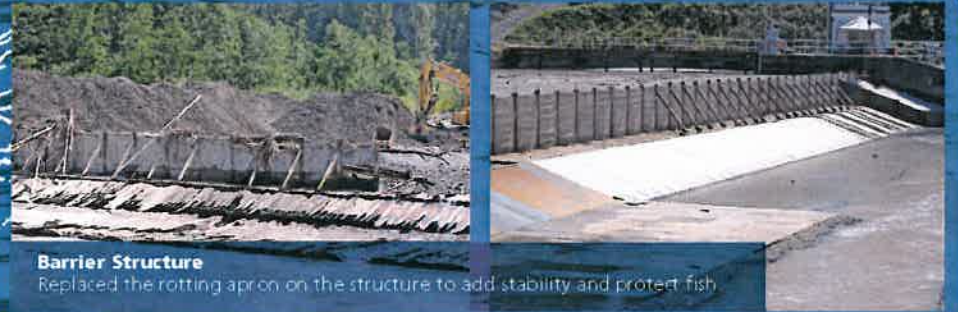
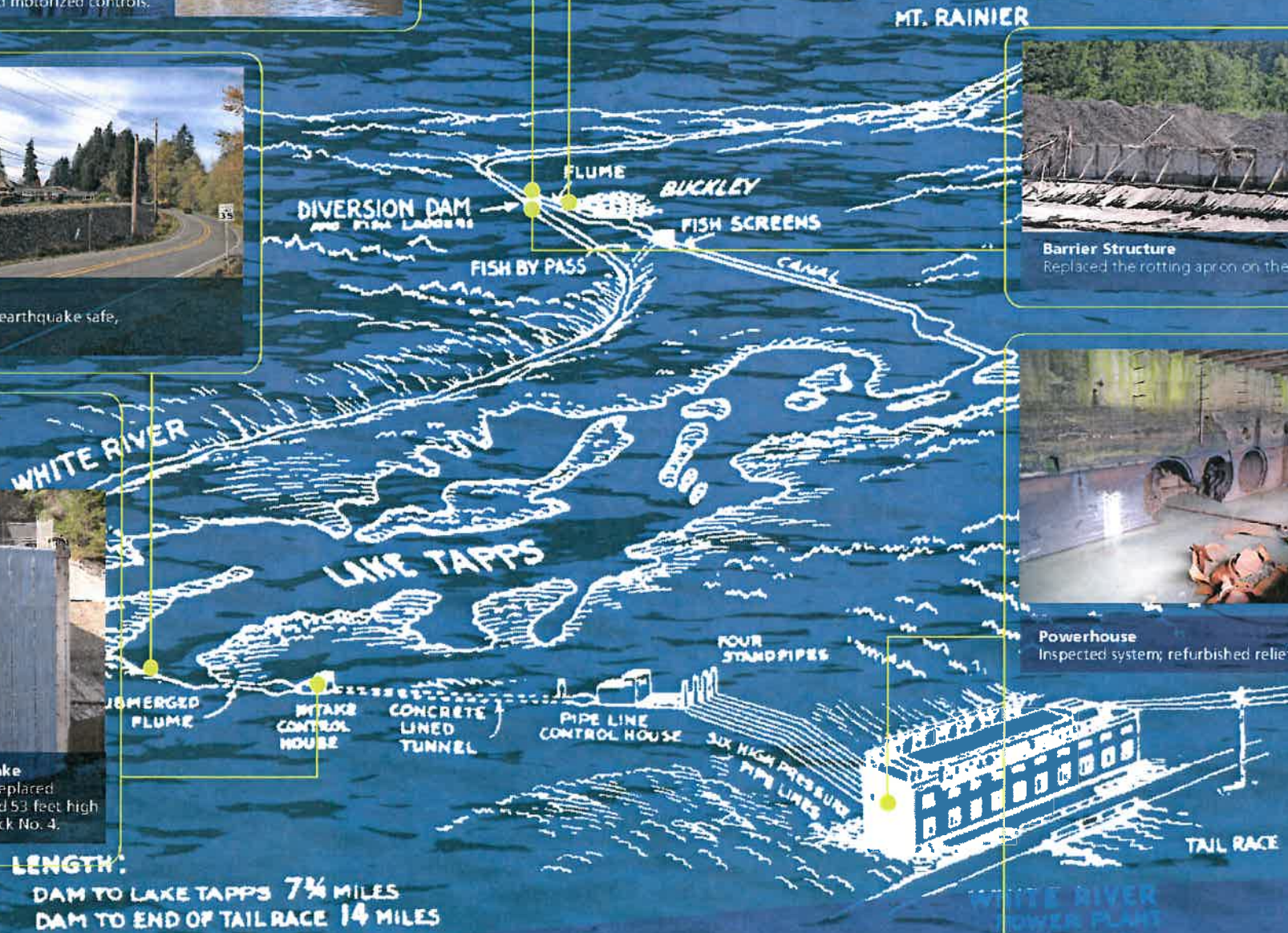


**Dike 3**  
Completed seismic remediation to make the dike earthquake safe, and worked to control water seepage.



**Lower Conveyor Assessment and Tunnel Intake**  
Inspected intake tunnel, forebay and penstocks; replaced intake trash rack with new steel 45 feet across and 53 feet high and made new stop logs; decommissioned Penstock No. 4.

**LENGTH:**  
DAM TO LAKE TAPPS 7 1/4 MILES  
DAM TO END OF TAIL RACE 14 MILES



**Barrier Structure**  
Replaced the rotting apron on the structure to add stability and protect fish



**Powerhouse**  
Inspected system; refurbished relief valves; repaired discharge tunnels.

