



DETERMINATION OF EXEMPTION

WHITE RIVER - LAKE TAPPS PROJECT PROGRAMMATIC MAINTENANCE AND REPAIR PROJECT

Description of Proposal: WHITE RIVER - LAKE TAPPS PROJECT PROGRAMMATIC MAINTENANCE AND REPAIR PROJECT

Since it purchased the White River - Lake Tapps Reservoir Project from Puget Sound Energy (PSE) in December 2009, Cascade has been engaged in a methodical assessment and maintenance and repair of the conditions of all its facilities at the White River-Lake Tapps Reservoir Project.

Attachment A lists Cascade's current best estimate of the maintenance and repair activities that may need to be undertaken during next 5 years within the portions of the White River-Lake Tapps Reservoir Project located at the Lake Tapps Reservoir, the Flowline and surrounding lands. This Proposal does not include the Powerhouse or the Tailrace.

Proponent and Lead Agency: Cascade Water Alliance

Location of Proposal, including street address, if any: White River -- Lake Tapps Reservoir Project

Responsible official: Michael Gagliardo

Position/title: Director of Planning, Cascade Water Alliance

Phone: 425-453-0930

Address: 520 112th Avenue NE, Suite 400, Bellevue, WA 98004

As the Responsible Official for the Lead Agency for this proposal, I have determined that the Proposal is exempt from SEPA under WAC 197-11-800 which states:

(3) Repair, remodeling and maintenance activities. The following activities shall be categorically exempt: The repair, remodeling, maintenance, or minor alteration of existing private or public structures, facilities or equipment, including utilities, recreation, and transportation facilities involving no material expansions or changes in use beyond that previously existing; except that, where undertaken wholly or in part on lands covered by water, only minor repair or replacement of structures may be exempt (examples include repair or replacement of piling, ramps, floats, or mooring buoys, or minor repair, alteration, or maintenance of docks). The following maintenance activities shall not be considered exempt under this subsection:

- (a) Dredging of over fifty cubic yards of material;*
- (b) Reconstruction or maintenance of groins and similar shoreline protection structures;*
- (c) Replacement of utility cables that must be buried under the surface of the bedlands; or*
- (d) Repair/rebuilding of major dams, dikes, and reservoirs shall also not be considered exempt under this subsection.*

The proposed maintenance and repair activities all fall within this exemption and do not include activities

Determination Of Exemption

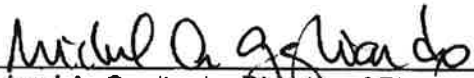
WHITE RIVER - LAKE TAPPS PROJECT PROGRAMMATIC MAINTENANCE AND REPAIR PROJECT

Page 2 of 2

that shall not be considered exempt under this subsection. The activities involve no material expansions or change in use beyond that previously existing.

This decision was made after review of the Proposal Description for all the maintenance activities and other information on file with the lead agency. Taken as a whole, the maintenance activities do not constitute activities that shall not be considered exempt under this subsection.

DATE: August 15, 2016


Michael A. Gagliardo, Director of Planning
And SEPA Responsible Official

ATTACHMENT A

Cascade's Pierce County Maintenance and Repair Activities Work Plan

Activity	Location(s)	When Activity will Occur
1.0 <u>Lake Tapps Reservoir Maintenance</u> Regular and periodic maintenance is required in and around the lake including:		
1.1 Maintenance and repair of the tunnel intake facilities and its associated trash rack facilities (to include building repair, gate repair, installation of a pad for a crane needed for repair and restoration work fencing installation and repair and vegetation control);	See Map 10	<ul style="list-style-type: none"> • Major repair work to building to occur between 2018 and 2022. • Inspect integrity of trash rack every 2 years. • Vegetation control as needed from April 1 to November 1 each year.
1.2	Entire reservoir	Periodic maintenance as needed
1.3	See Maps 7 to 10	
1.4		
1.5	See Map 10	<ul style="list-style-type: none"> • Periodic maintenance as needed. • Vegetation control as needed from April 1 to November 1 each year.
1.6	Valves see Maps 2 and 10 Gauges see Maps 1 and 10 Underground pipeline see Maps 3,4 &5	Periodic maintenance as needed
1.7	See Map 6	Periodic maintenance as needed
1.7		

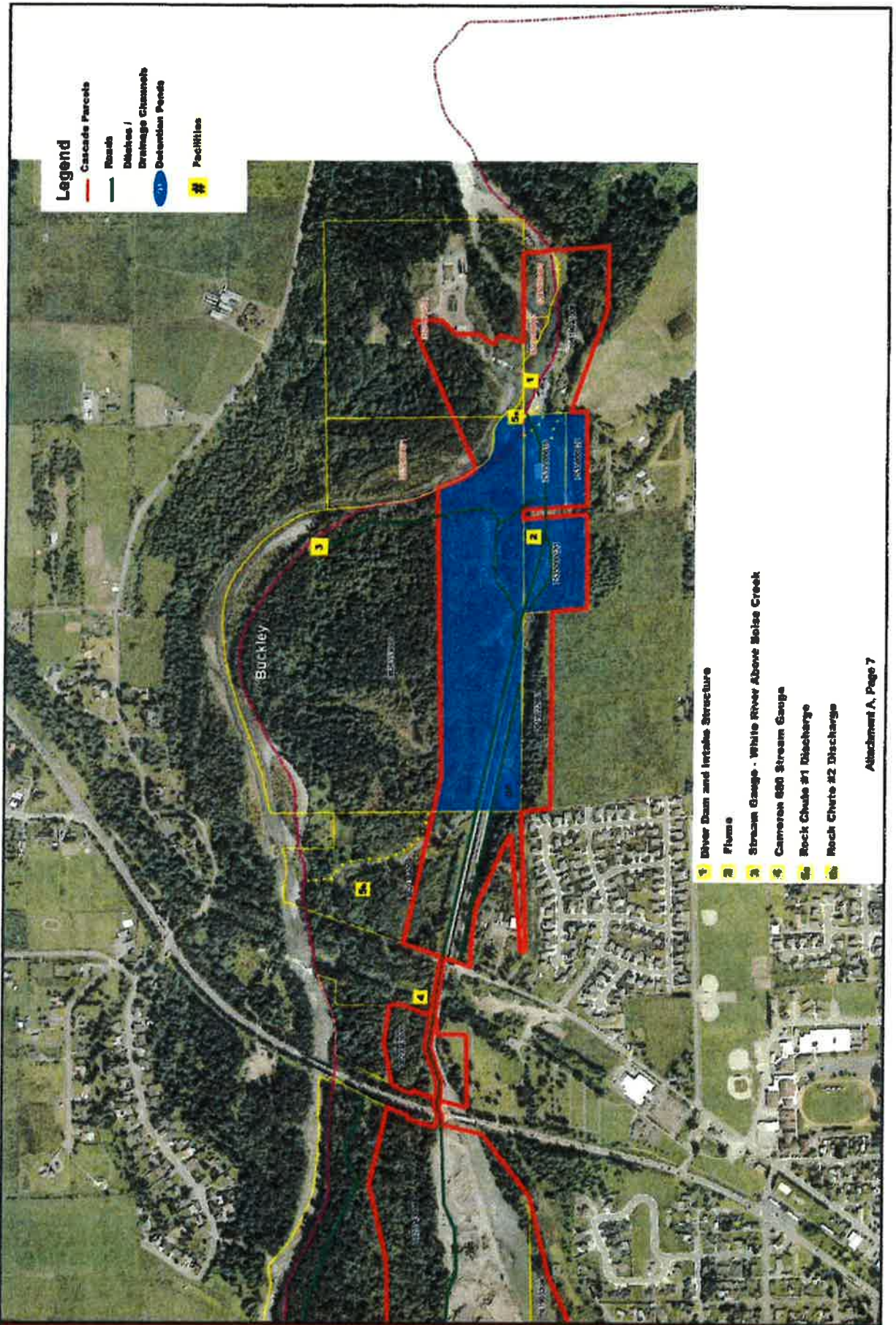
Activity	Location(s)	When Activity will Occur
<p>2.0 Dikes Lake Tapps is impounded by a series of dikes ranging in length from a few hundred to a few thousand feet and from a few feet in height up to 40 feet. The system of dikes maintains lake levels and prevents flooding when the water is at "full pool." The goal of maintenance is to prevent structural deficiencies at the dikes and to keep measurement equipment, such as the weir and piezometer in working order, including:</p>	<p>See Maps 2, 7 & 9</p>	
<p>2.1 Inspect, maintain and repair weirs;</p>	<p>See Maps 2 and 9</p>	<ul style="list-style-type: none"> • Inspections weekly when reservoir level above 540', monthly when below. • Maintenance and repair as needed.
<p>2.2 Inspect, maintain and repair piezometers in and around the Lake Tapps dikes; and</p>	<p>See Maps 2, 7 & 9</p>	<ul style="list-style-type: none"> • Inspections weekly when reservoir level above 540', monthly when below. • Maintenance and repair as needed.
<p>2.3 Regular maintenance activities, including removing or preventing growth of large vegetation maintenance and repairs to dike surfaces, maintaining signage and ecology block identification of dikes.</p>	<p>See Maps 2, 7 & 9</p>	<ul style="list-style-type: none"> • Maintenance and repair as needed. <p>As needed- typically 4 times/year starting in April.</p>

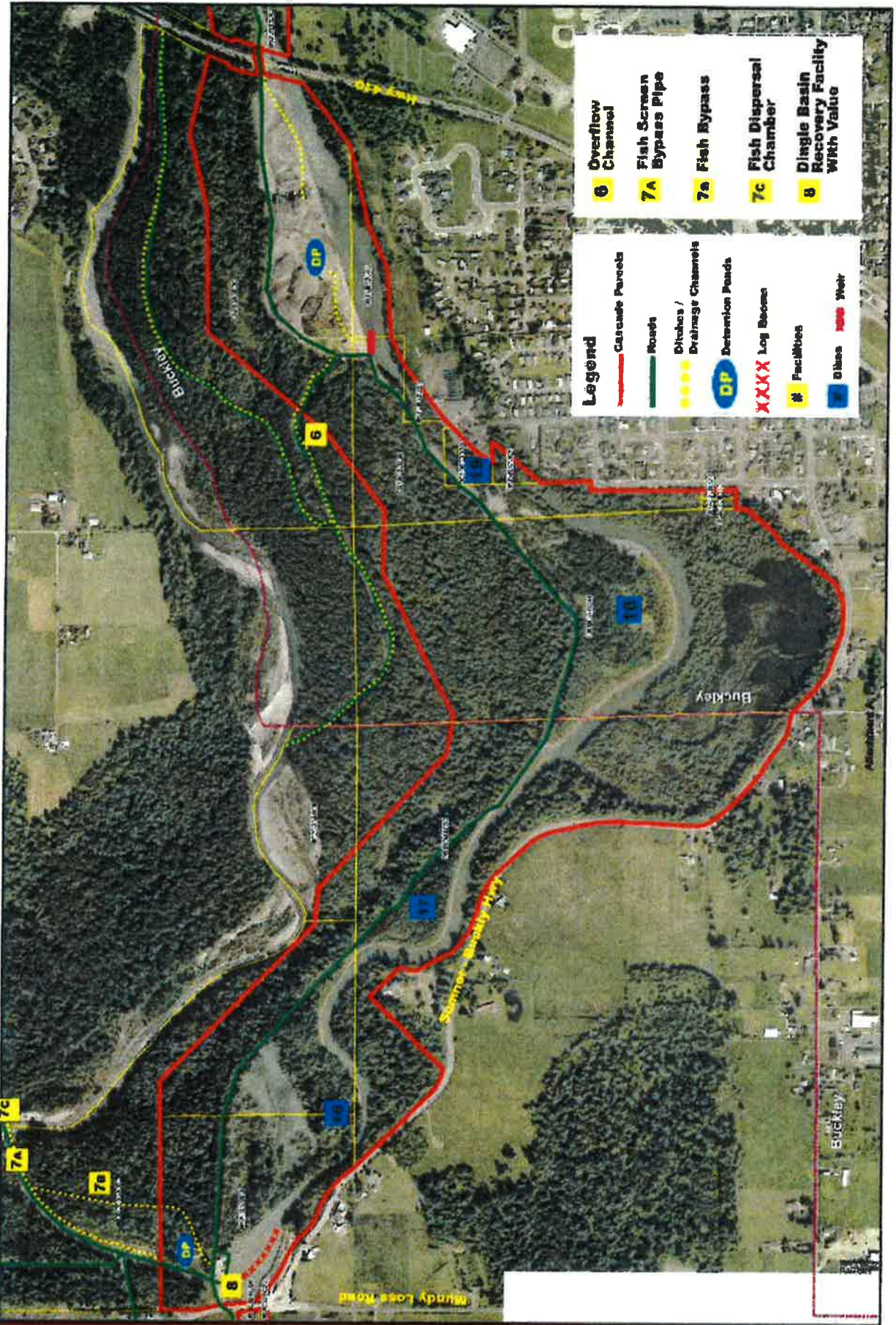
Activity	Location(s)	When Activity will Occur
<p>3.0 <u>Ditches</u> Cascade is responsible for maintaining several thousand linear feet of artificial drainage ditches necessary to protect its dikes, other facilities and property. The goal of maintenance is to keep water flowing and prevent structural deterioration, including:</p>	<p>See Maps 1 through 7, 9 and 10</p>	
<p>3.1 Vegetation control;</p>		
<p>3.2 Removing debris and sediment to maintain flow, and</p>		<p>April to November, as needed. Twice yearly usually in spring and fall as needed and following significant rainfall events.</p>
<p>3.3 Maintenance of and repairing damage to culverts or the interior of the ditches.</p>		<p>Periodic maintenance as needed.</p>
<p>4.0 <u>Roads and Stormwater Facilities</u> Several private utility roads provide access to Cascade's facilities. Storm drainage is collected in adjacent ditches and culverts. It should be noted, although all of the Cascade roads are shown on the attached maps, for the most part, the adjacent ditches and culverts associated with each road are not separately designated or identified. The goal of maintenance is to keep roads safe and passable and to prevent failure of storm drainage ditches and culverts, including:</p>	<p>See Maps 1 through 7, 9 and 10</p>	
<p>4.1 Vegetation control;</p>		<p>April to November, as needed. Brush maintenance</p> <ul style="list-style-type: none"> • Main roads twice yearly • Minor roads every 3 years.

Activity	Location(s)	When Activity will Occur
4.2	Repairing or regrading road surfaces, and	Generally every 6 months
4.3	Maintaining ditches and culverts.	See §3 above.
5.0	Fish Screen and Fish Return The fish screen traps all downstream migrating fish and shunts them to the fish return bypass so they can reenter the White River. The goal of maintenance is to keep the fish screen equipment functioning properly and to remove blockages to maintain water flow, including:	
5.1	Periodic removal of debris and sediment from log booms and trash rack; and	Periodic maintenance as needed -- roughly 3 times a year
5.2	Repair of equipment.	Periodic maintenance as needed
6.0	Diversion Canal/Flowline Water is conveyed from the White River to Lake Tapps Reservoir through a diversion canal consisting of a canal, dikes, pipelines, and settling basins. This system is sometimes referred to collectively as the "flowline." The goal of maintenance is to maintain flow of water from the diversion dam to Lake Tapps and to keep the dikes structurally sound, including:	
6.1	Removal of debris;	Periodic maintenance as needed
6.2	Sediment removal; and	Typically every 5 years.

Activity	Location(s)	When Activity will Occur
<p>6.3 Vegetation control and other maintenance and repair to embankments and dikes.</p>		<p>Periodic maintenance as needed -- typically every 3 years.</p>
<p>7.0 <u>Log Booms</u> The Lake Tapps Project contains a number of log booms. Log booms are located at various places on the Lake and in the flowline to collect floating debris before it reaches critical facilities. Maintenance of log booms includes replacing rotting logs and ensuring they remain properly secured.</p>	<p>See Maps 2, 3, 6 & 9</p>	<p>As needed yearly April 1 through November.</p>
<p>8.0 <u>Buoys</u> Cascade has installed several buoys in Lake Tapps to mark hazards or provide other warnings. Buoys may need to be maintained periodically to repair or replace signs or buoy equipment, or to ensure anchoring is secure.</p>	<p>See Maps 6, 7, 8 & 9</p>	<p>As needed yearly April 1 through November.</p>
<p>9.0 <u>Trespass Control Measures</u> Cascade uses several types of trespass control measures to secure its facilities, including fences, signs, and barricades. The goal for maintenance on these trespass control measures includes:</p>	<p>All of Cascade's Pierce County ownership and access roads are identified on the attached maps. Cascade's trespass control measures are located at road entrances and along property lines where necessary.</p>	<p>Periodic maintenance as needed Periodic maintenance as needed</p>
<p>9.1.</p>	<p>Repairing fence segments or gates;</p>	
<p>9.2</p>	<p>Repairing or replacing warning and "No Trespassing" signs;</p>	
<p>9.3</p>	<p>Vegetation control to maintain sight lines or remove hazardous conditions, and</p>	<p>Periodic maintenance as needed</p>

	Activity	Location(s)	When Activity will Occur
9.4	Repairing damaged facilities in cases of vandalism or normal wear and tear.		Periodic maintenance as needed



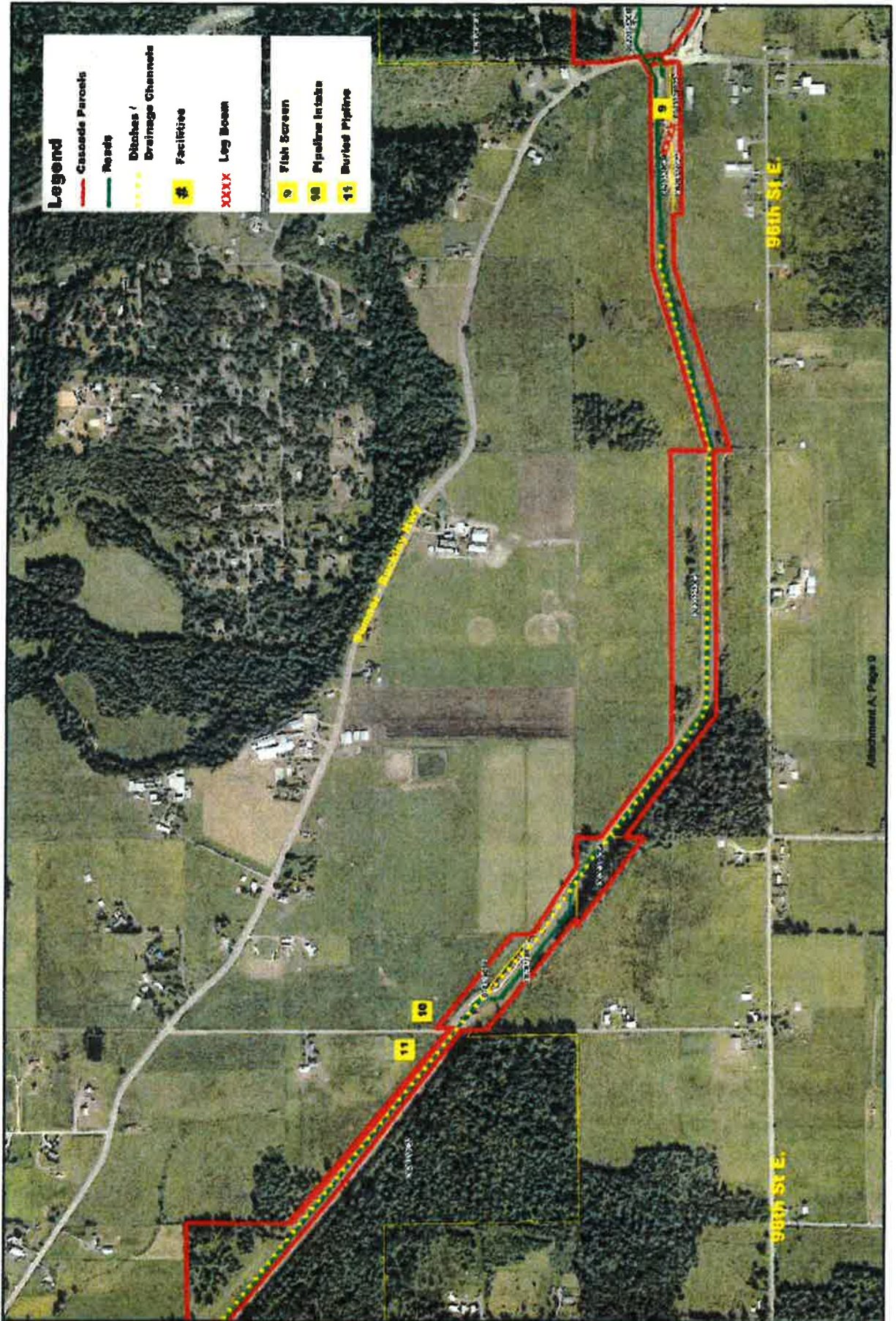


- 6** Overflow Channel
- 7A** Fish Screen Bypass Pipe
- 7a** Fish Bypass
- 7c** Fish Dispersal Chamber
- 8** Dingle Basin Recovery Facility With Valve

- Legend**
- Cascade Ponds
 - Roads
 - Ditches / Drainage Channels
 - Detection Ponds
 - Log Booms
 - Facilities
 - Dikes
 - Weir

January 18, 2008





Legend

- Cascade Permits
- Resets
- Ditches / Drainage Channels
- Facilities
- Log Booms
- 7/8th Screen
- Pipeline Intake
- Buried Pipeline

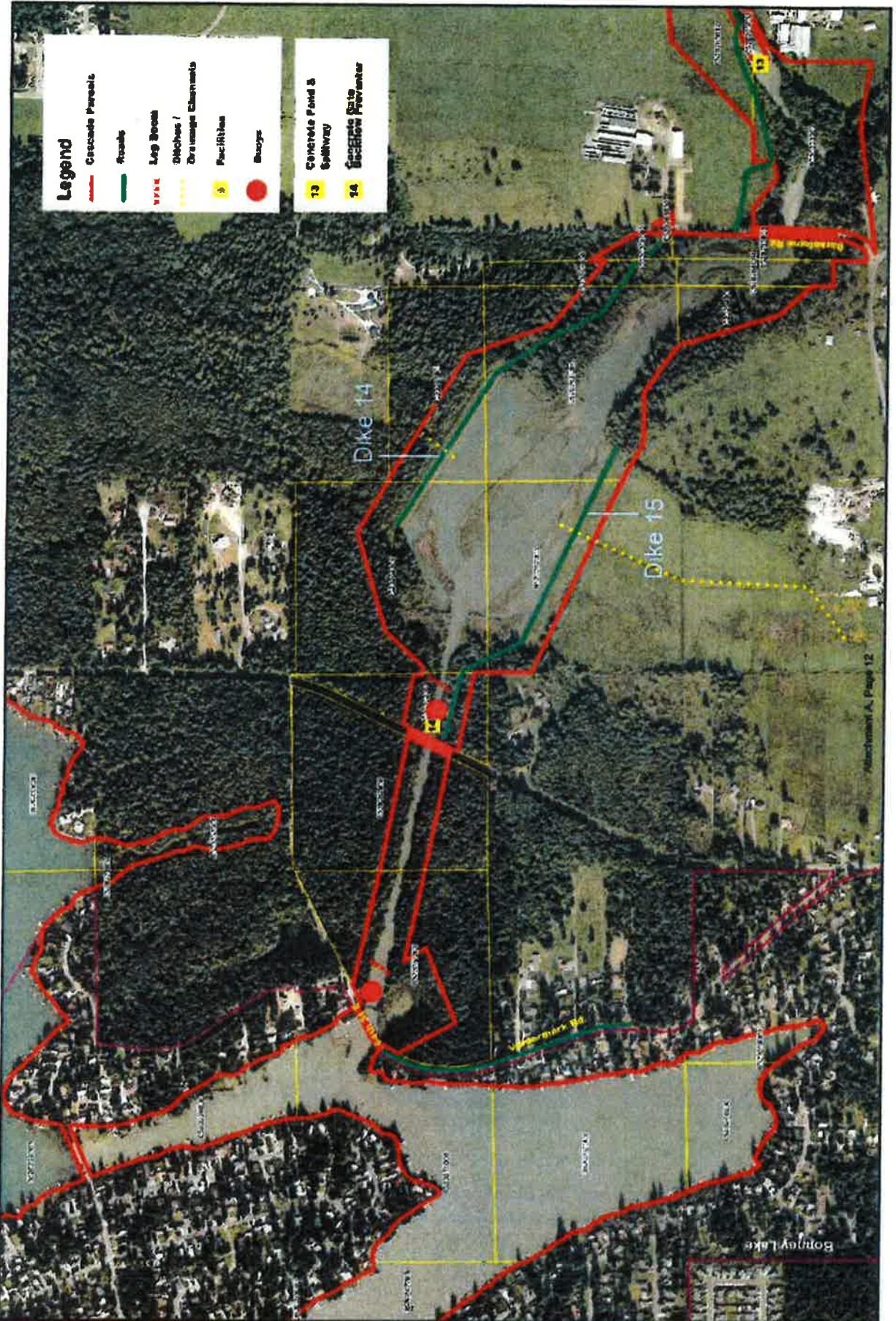
Legend	
	Culvert Parcels
	Stops
	Ditches / Drainage Channels
	Facilities
	11 Buried Pipeline
	12 Concrete Channel



January 18, 2008

300
Feet





- Legend**
- Concrete Ponds
 - Roads
 - - - Log Boom
 - - - Ditches / Drainage Channels
 - Facilities
 - Buoy
- 13 Concrete Pond & Spillway
 - 14 Section Preventer

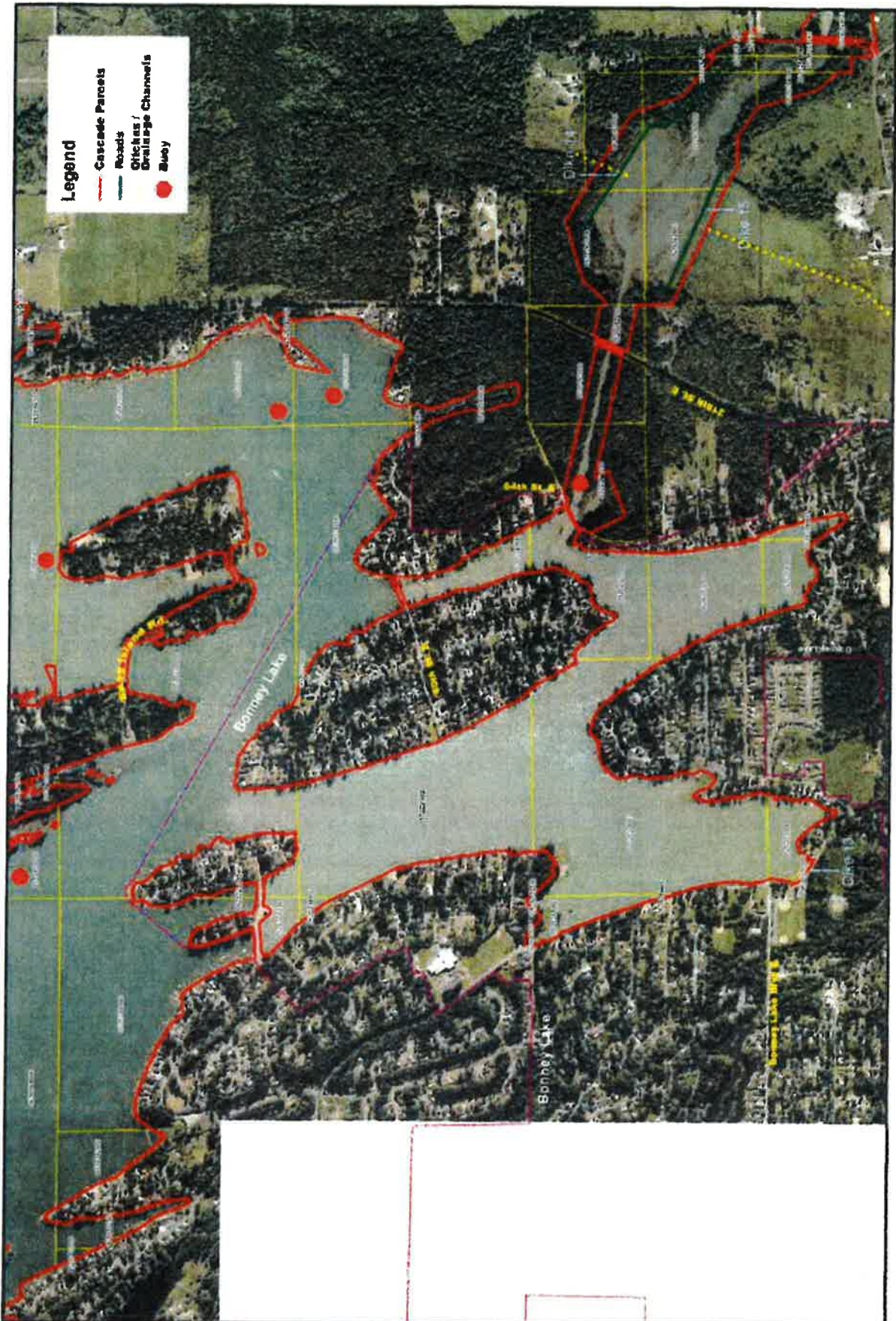
January 18, 2008

0 330
Feet



Map 8 of 10

Attachment A, Page 12





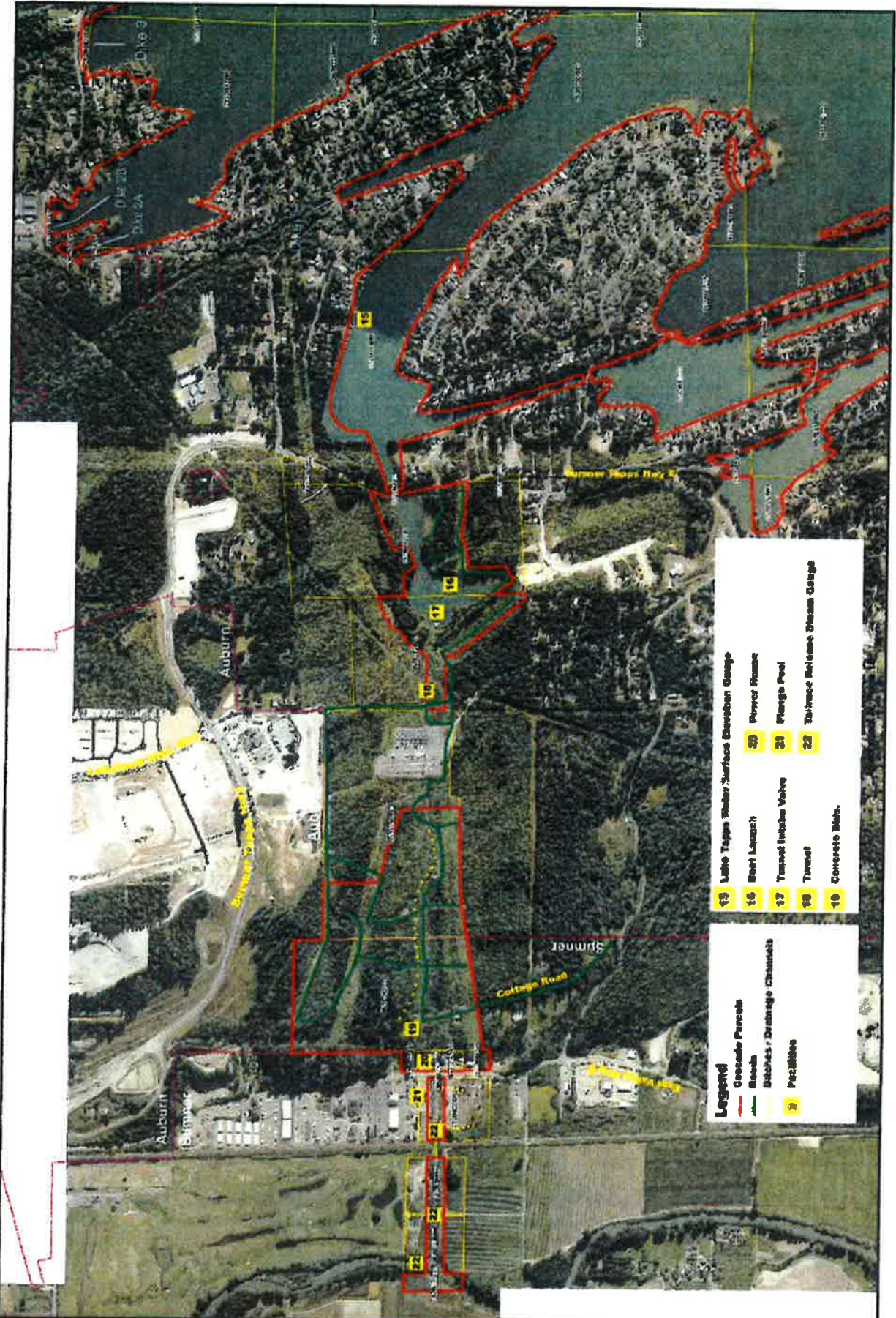
January 18, 2008

0 500
Feet



Map 8 of 10





- Legend**
- Grade Parcell
 - Block
 - Inflow / Drainage Channel
 - Pipeline
 - 15 Loko Trap Water Surface Elevation Gauge
 - 16 Reef Launch
 - 17 Tunnel Inflow Valve
 - 18 Tunnel
 - 19 Concrete Blk.
 - 20 Power House
 - 21 Fringe Pool
 - 22 Tailrace Release Steam Gauge

January 18, 2008

