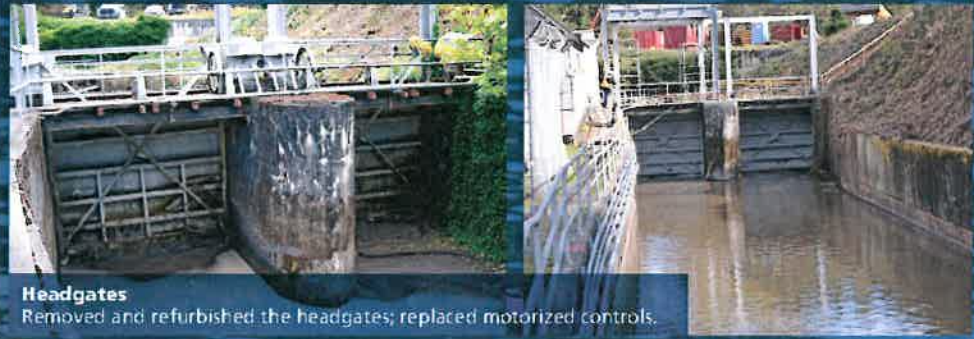


White River–Lake Tapps — Yesterday and Today



Headgates
Removed and refurbished the headgates; replaced motorized controls.



Timber Flume Replacement
Replaced 2,200 feet of 28 feet wide timber flume with 18 foot wide concrete flume; repaired sections of existing concrete flume

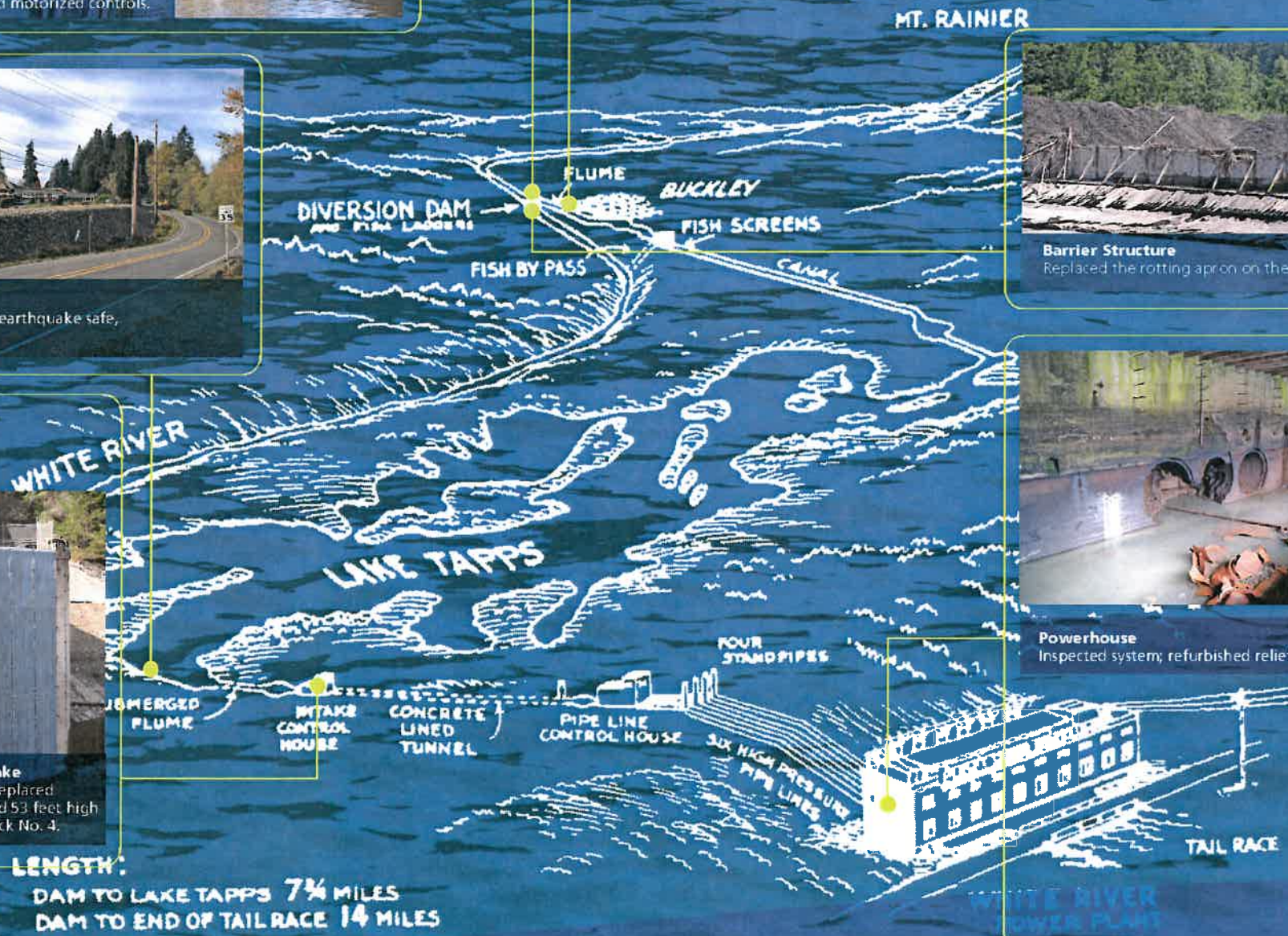


Dike 3
Completed seismic remediation to make the dike earthquake safe, and worked to control water seepage.



Lower Conveyor Assessment and Tunnel Intake
Inspected intake tunnel, forebay and penstocks; replaced intake trash rack with new steel 45 feet across and 53 feet high and made new stop logs; decommissioned Penstock No. 4.

LENGTH:
DAM TO LAKE TAPPS 7 1/4 MILES
DAM TO END OF TAIL RACE 14 MILES



Barrier Structure
Replaced the rotting apron on the structure to add stability and protect fish



Powerhouse
Inspected system; refurbished relief valves; repaired discharge tunnels.

