

Cascade Water Alliance's 20th Anniversary
March 25, 2019
Bellevue, WA

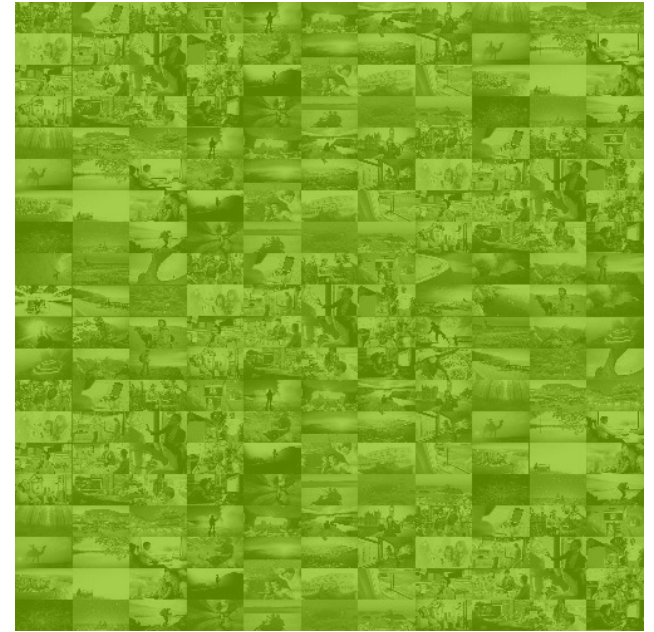
Environmental Stewardship @ Microsoft

Paul Fleming
Corporate Water Program Manager
paul.fleming@microsoft.com

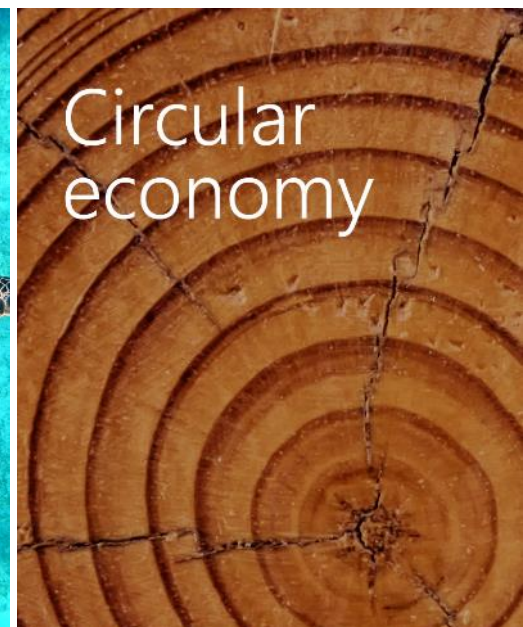
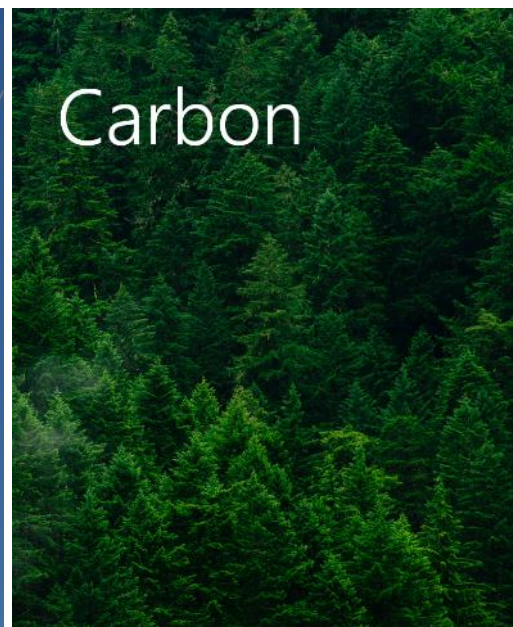


Microsoft mission

Empower every person and
every organization on the
planet to achieve more



Our focus areas



Transparency



Powered by data



Investment in R&D



Partnership

Internal Carbon Fee



Track carbon emissions from operation of our datacenters, labs, offices, manufacturing sites, and business air travel

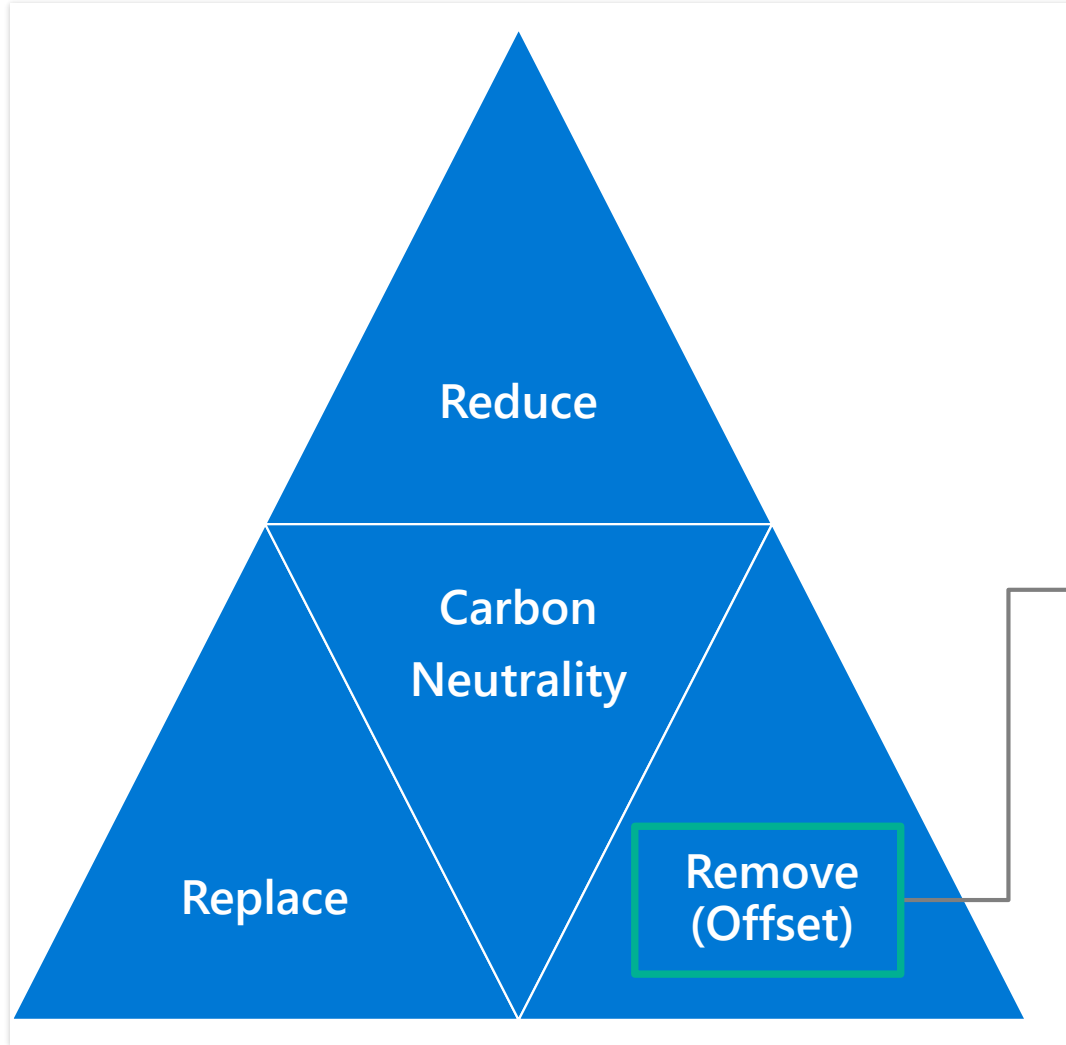


Charge business groups a carbon neutral fee for their portion of emissions



Invest in renewable energy, carbon offsets, technology innovation for sustainability, and emissions tracking/reporting

Microsoft's Approach to Achieving Carbon Neutrality



Reduce operational & electricity-related carbon emissions 75% by 2030 relative to a 2013 base year



Replace our energy purchases with 100% renewable energy



Remove carbon from the atmosphere through purchase of carbon offsets/carbon sequestration



Carbon neutral operations*

* (Microsoft's carbon neutrality commitment covers Scope 1-direct emissions, Scope 2-electricity-based emissions, and partial Scope 3- business air travel)

100% carbon neutral



21 billion

kWh purchased and applied
(green power)



9.6 million

mtCO₂e carbon reduction
(green power reductions only)



8.2 million

people impacted
(carbon offset community projects)



5.2 million

acres protected
(forestry and land management
carbon offset projects)

Microsoft Global Carbon Offset Portfolio FY13-FY18

Supporting low-carbon economic development around the world

More than 8.2 million people impacted by projects supported by Microsoft:

- 55 projects
- 16 project types
- 30 countries
- >3.1 M mtCO₂e



Water Scarcity

There is an unprecedented demand on the world's limited fresh water supply.

Population growth,
urbanization, growing
middle class



50% more people by 2050



Increased demand
for goods and services



4 billion more consumers
in cities by 2025



Unprecedented
demand on the
world's water supply



70% Agriculture
20% Industry
10% Domestic



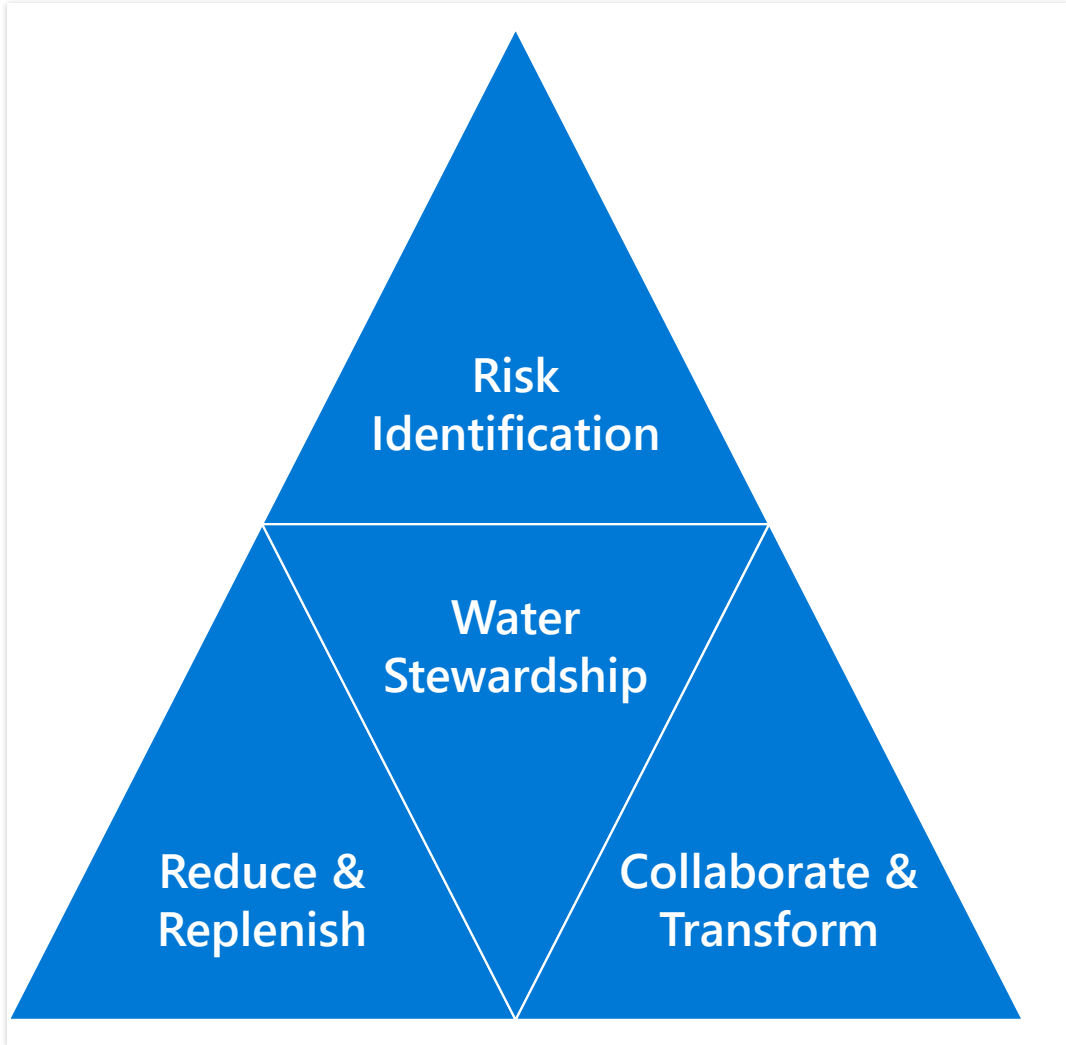
Demand exceeding
supply by

40%

Within
two decades



Microsoft's Approach to Water Stewardship



Identify water stressed regions where we have operational interests



Invest in water replenishment project to balance our water consumption, reduce risks



Partner for collective action, enable and foster digital transformation



Water Stewardship

Artificial Intelligence

“

AI can accelerate our ability to observe environmental systems and how they are changing at a global scale, convert those data into useful information, and apply that information to take concrete steps to better manage our natural resources.”

BRAD SMITH,
Microsoft President

AI for Earth

Empowering people and organizations
to solve global environmental challenges
through technological innovation

Focus areas

AI for Earth is focused on four areas that are vital in building a sustainable future:



Agriculture

Feed the growing world population



Water

Conserve and protect water sources



Biodiversity

Monitor and protect species from extinction



Climate change

Reduce climate change impact on communities

Pillars of the program



INCREASE ACCESS



PROVIDE EDUCATION







FUEL INNOVATION

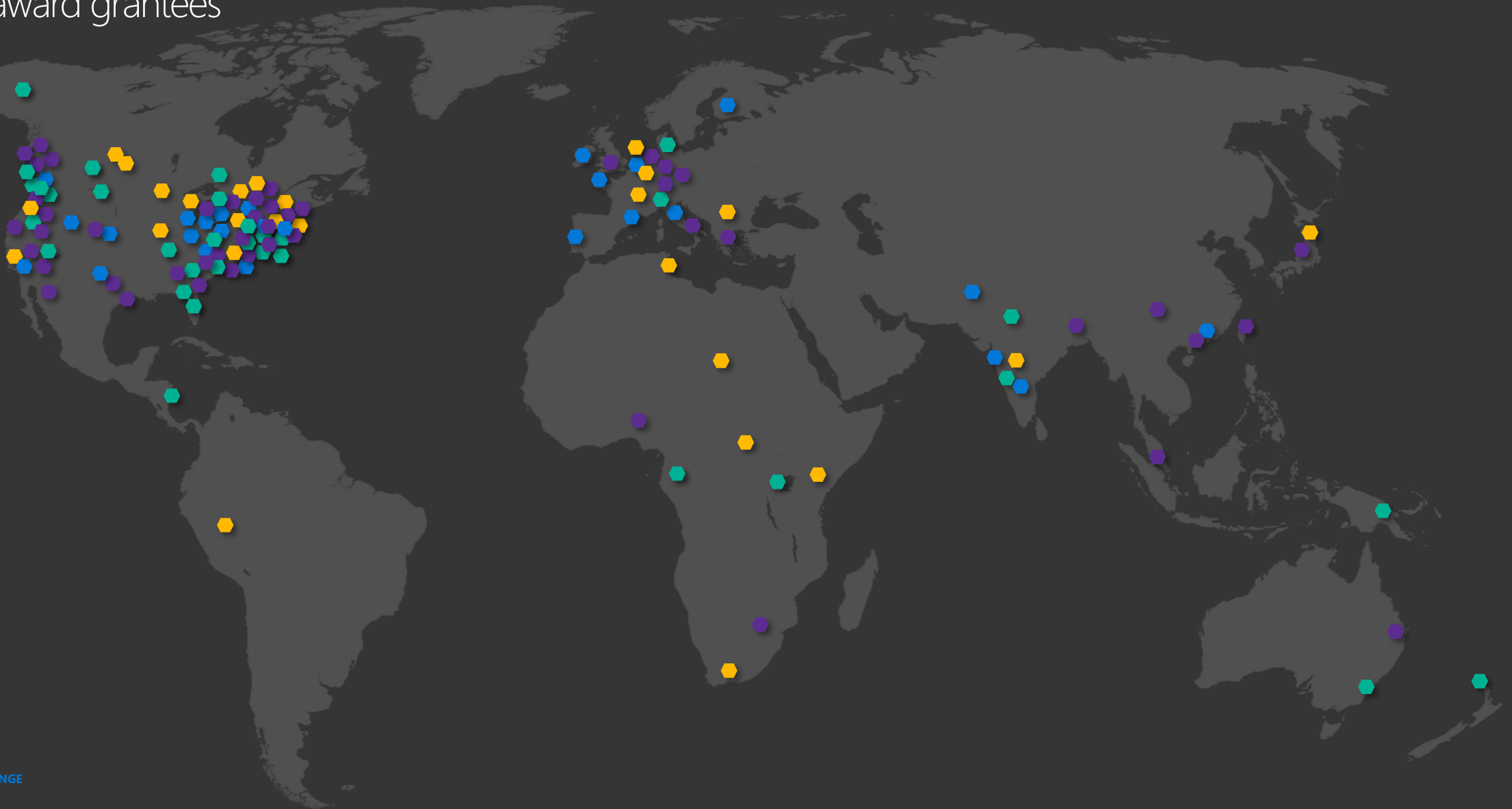
AI for Earth

Azure award grantees



Headquarters

-  AGRICULTURE
-  WATER
-  BIODIVERSITY
-  CLIMATE CHANGE



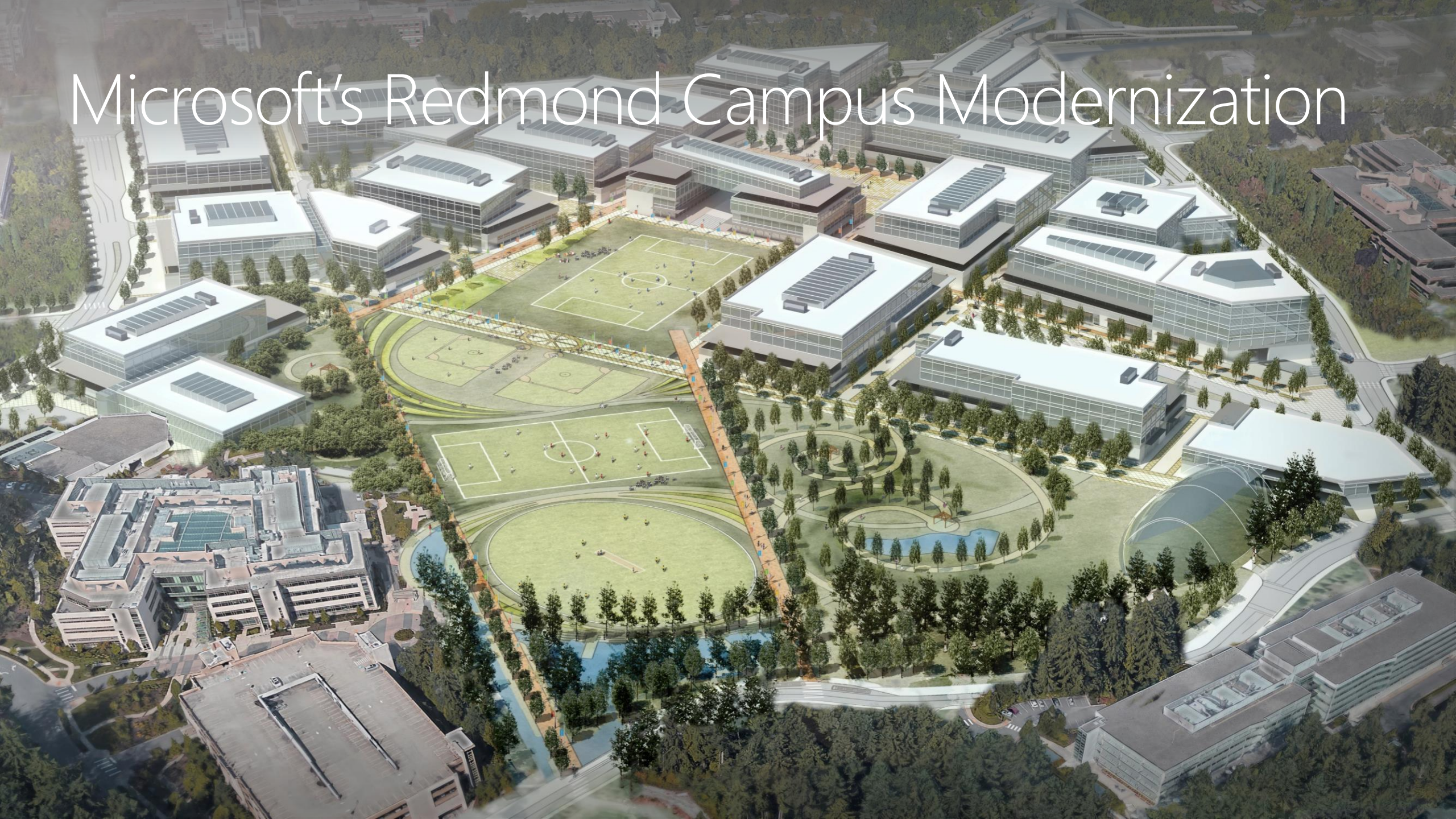
Microsoft's Silicon Valley Campus



Microsoft's Israel Campus



Microsoft's Redmond Campus Modernization





Thank you

Paul.fleming@Microsoft.com